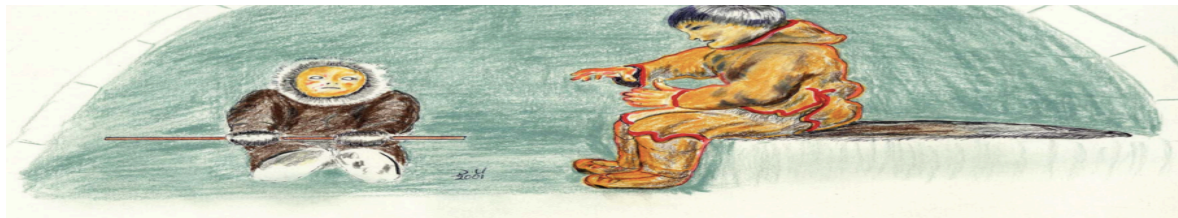


$$\Delta c^a \sigma \Delta^c \eta^c \rho^c \sigma^c \quad \triangleright^b \mathcal{D} \triangleright \eta \sigma^b$$

- Be patient and persistent when teaching your children and take time to explain to them the importance of the *miligait*
- ፆጠሪናፀረገጥኛነትን ማስተምርና ማብራራት  
ለጭንቅልነትና ለጭንቃማነት ምክንያት
- Teach them to respect others, nature, and themselves (physical, emotional, and spiritual self)
- ለጭንቅልነትና ለጭንቃማነት ምክንያት  
ለጭንቅልነትና ለጭንቃማነት ምክንያት  
(በጥንቃቄና በጥንቃቄ መዘጋጀት)

- Talk to your teens about healthy relationships and the importance of respect in both friendly and romantic relationships
- ᐅᖃᓄᑦᑕᑎᑦᑐᑦ ᑭᑯᑲᑦᑐᑦ ᐃᑕᑦᑏᑦᑕᑦᑎᑦ ᐱᑭᑦᑕᑎᑦᑐᑦ ᐅᐱᑭᑦᑎᑦ ᑕᑭᐃᑦᑎᑦ ᐃᑕᑦᑎᑦᑎᑦᑐᑦ ᐱᑭᑦᑕᑎᑦᑐᑦ
- Be strict with their chores and work; explain that this is crucial to become a successful adult
- ᐱᑕᑦᑎᑦᑐᑦᑐᑦ ᐱᑕᑦᑎᑦᑐᑦᑐᑦᑐᑦ ᑕᑭᐃᑦᑎᑦᑐᑦ ᐱᑕᑦᑎᑦᑐᑦᑐᑦᑐᑦ
- Remind your teen that there are always consequences. Making good decisions will end in good results.
- ᐃᖃᑕᑎᑦᑐᑦ ᑭᑯᑲᑦᑐᑦ ᐱᑕᑦᑎᑦᑐᑦᑐᑦᑐᑦᑐᑦ ᐃᑕᑦᑎᑦᑐᑦᑐᑦᑐᑦᑐᑦ ᐱᑕᑦᑎᑦᑐᑦᑐᑦᑐᑦ



$\Delta_{\mathcal{M}} \Delta^c \wedge^{\mathfrak{d}} \dot{\gamma} \quad \mathcal{L}_{\mathcal{C}^L \mathcal{D}^R} \quad \Delta_{\mathcal{M}} \dot{\gamma}^{\mathfrak{b}} \sigma^{\mathfrak{b}}$

$L_{C^b} \Delta^C \wedge^C c_n \triangleright L_C \Delta^{\omega} J \Delta^{\sigma} J^C \triangleleft L_C$   
 $\Delta^{\omega} \Delta^C \text{ 'b} \triangleright \triangleright L_C \triangleright \text{'b} \omega \text{'r} \omega^C$

$$\Delta \sigma \Delta^c \quad L \subset L \Delta \quad \Delta D^c \supset \Gamma^c \quad \wedge^c \gamma \Delta \gamma^L \sigma^c \sigma^b$$

$$\sigma^L \subset \sigma^c \sigma^b \sigma^c \sigma^b$$

Equality	ᐃᑭᔨᓪᕈᖅᐱᑦᓂᑦ
Family	ᐃᑕᓯᒐᑦᓂᑦ
Honesty	ᐃᑲᐱᑦᓇᑦᓂᑦ
Apologize	ᐃᑯᓴᓗᓄᑦᓂᑦ
Volunteer	ᐃᑳᐸᓚᑦᓂᑦ
Respect	ᐃᐱᓵᓯᒐᑦᓂᑦ
Responsible	ᐱᑳᓚᑶᓂᑦᓂᑦ
Forgiveness	ᐃᓴᓚᓴᓴᐸᓴᓴᑦᐱᓯᓴᓂᑦᓂᑦ

Think about how these values are important in your life.  $\Delta^{\dagger} L P \rightarrow P^c$   $C d \Delta$   $L c L \Delta^c$   $^c b \omega^b$   
 $\wedge^c c \Delta b P N^b L^a L^c$   $\Delta^{\dagger} \omega^{\dagger} \sigma^b$

$$\begin{array}{l} \Delta \sigma^a J \Delta \sigma^b \\ \wedge \rho^c \Delta \sigma^d J^c \\ \wedge \sigma^a \Delta \rho^b \wedge \sigma^c \end{array}$$

L<sub>C</sub>Δ<sup>C</sup> #3

# Building a Strong Moral Character and Being Heart Centred

$$\begin{array}{c} \wedge^{\mathbb{C}} \mathcal{P}^{\mathbb{C}} \otimes \sigma^{\mathbb{C}} \\ \otimes \sigma^{\mathbb{C}} \otimes \sigma^{\mathbb{C}} \end{array}$$


LCL<sup>9b</sup>

$$\begin{aligned} \wedge^c \gamma \Delta^a \underline{a}^c \sigma^c \sigma^b & \quad \underline{a}^b \sigma^c \sigma^b \sigma^c \sigma^b \\ \cap \Delta^a \underline{a} \Delta^a \gamma^b &: \end{aligned}$$

- Showing humanity
- $\Delta^b \wedge J^c \neg b \cap b^c \sigma^{\neg b}$
- Behaving ethically
- $\wedge^c \neg \triangleleft^c \sigma^{\neg b}$
- Being self-reliant
- $LPC \dot{\neg} \triangleleft^c \sigma^{\neg b}$
- Respecting yourself and others
- $\triangleright \wedge J^c \mu \sigma^{\neg b} \quad \Delta c^{\neg} \mu \sigma^c \quad \triangleleft^c \mu \sigma^{\neg}$
- Being responsible and accountable
- $\dot{\neg} \wedge^b \neg \triangleright \dot{\neg} \triangleleft^c \sigma^{\neg b}$

၄၆၀၄၆    ၂၃၆၂၃၆၂၃    ၈၃၂၃၂၃၂၃

ለፋይናንስ ሚኒስቴር ልማት ሚኒስቴር ልማት ሚኒስቴር ልማት ሚኒስቴር  
ዲፕሎማሲ ሚኒስቴር ልማት ሚኒስቴር ልማት ሚኒስቴር ልማት ሚኒስቴር

- Talking with your children and teaching them about ethics
- ፎክሎር ልሳናትና ልሳናት ለሰላም
- Giving helpful criticism and encouragement
- ልሳናትና ልሳናት ለሰላም
- Supporting personal and cultural identity
- ልሳናትና ልሳናት ለሰላም
- Ensuring they are accountable for their accomplishments and mistakes
- ልሳናትና ልሳናት ለሰላም
- Giving them chores and responsibilities
- ለሰላም ልሳናት
- Teaching them to respect their family, friends, Elders, and nature
- ልሳናትና ልሳናት ለሰላም

$$\Delta c^a \sigma \triangleleft^c \cap^c \rho \sigma^b \quad \triangleright^b \supset \triangleright \cap \sigma^b$$
[illegible]

- Be nurturing and present with all of your children; be there to protect them when they need it
- <ΓᵐᵇΔΠΔᵗΔΠ< ΓΔσᵇΔΠ< ᵇ<ᵇᵇΠ<;  
ΓΔσᵇᵇΠ<ΔᵗΔΠ<

- Be a good role model for your children; they will pick up on your behaviours and action (e.g. do not fight in front of them, eat healthy, etc.).
- ᑕᐅᔭኤሳብፋጎጓር ወርሄወር, ልዩነትና ሉዊያውስ ኒተረቶችን ተለየልጋልጋር ᑕᐅᓂበረር ወርሄር, መምሪያው መሲካባር)
- Teach proper behaviour and discipline when needed, but in a calm manner (e.g. not to hit other people)
- ልዩመረቃን አይሸር በአማኝነት, የአቀረቡትን (እውነተኛ እርምጃ) ይጠቁኙ

